

LKVO
VODOCHODY



VODOCHODY, CZECH

23 MAR 12

10-2A

Eff 5 Apr

RNAV STAR

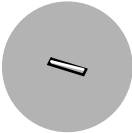
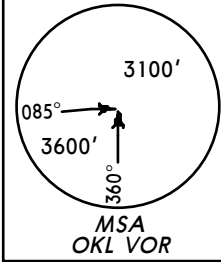
ATIS
123.02

*RUZYNE Radar
119.0

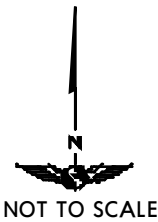
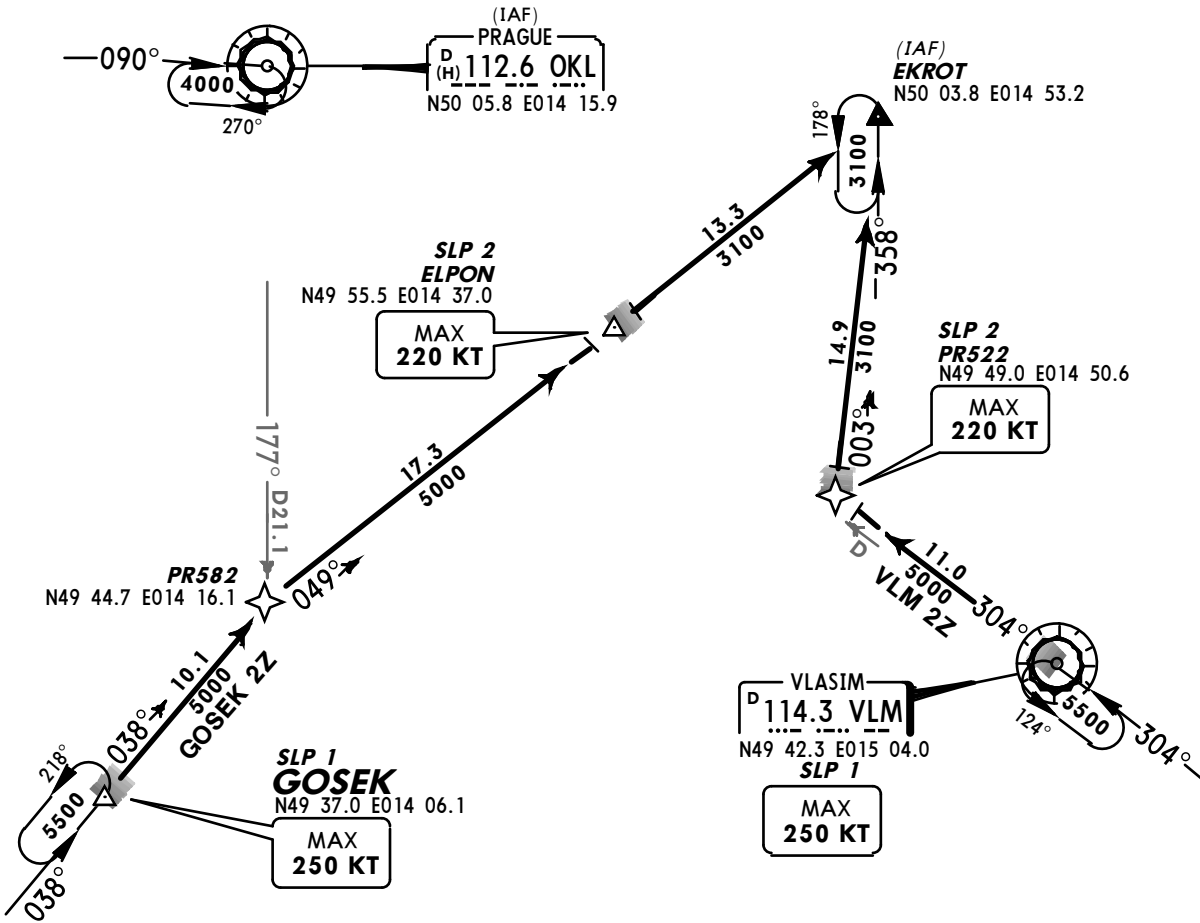
Apt Elev
919'

Alt Set: hPa (MM on request)
Trans level: By ATC Trans alt: 5000'
At initial contact with RUZYNE Radar state only callsign.

GOSEK TWO ZULU (GOSEK 2Z)[GOSE2Z]
VLASIM TWO ZULU (VLM 2Z)
RWY 28 RNAV ARRIVALS
P-RNAV REQUIRED



Direct distance
from OKL to:
Vodochody Apt **9NM**
from EKROT to:
Vodochody Apt **21NM**



NOT TO SCALE

SPEED RESTRICTION

Unless otherwise instructed
MAX 250 KT at SLP 1 or if flying
off-route at OKL 28 DME.
MAX 220 KT at SLP 2.
If unable to comply, advise ATC
immediately.



SLP

Speed Limit Point

STAR	ROUTING
GOSEK 2Z	GOSEK - PR582 - ELPON - EKROT.
VLM 2Z	VLM - PR522 - EKROT.